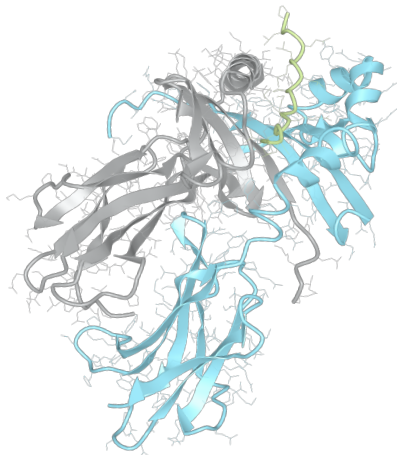


Product datasheet



sHLA– DRB1*04:07 DRA*01:01

DRB1*0407, DRB10407, DRB1*04, DRB04, DR4
DRA*0101, DRA0101, DRA*01, DRA01

Serological Name	DR4
Peptide Load	Endogenous
Modification	Unmodified
Conjugation	Unconjugated
SKU	DRB10407

Product Description

Allele Name	DR4 DRA*01:01 DRB1*04:07
HLA Class	HLA Class II
HLA Gene Locus	HLA-DR
Alternative Allele Name A Chain	DRA*0101, DRA0101, DRA*01, DRA01
Alternative Allele Name B Chain	DRB1*0407, DRB10407, DRB1*04, DRB04, DR4
Description	Recombinant, truncated Class II soluble Human Leukocyte Antigen (sHLA), naturally folded and glycosylated, loaded with endogenous peptides.
Serological Name	DR4
Serological Split	-
Allele Frequency [World Population]	
A chain	-
B chain	5.2%

Associated products

[DRB10407bio](#)
[DRB10407pe](#)

Product Specification

Product name	HLA-DRB1*04:07
HLA Species	Human
Host Cell Line Species	Mouse
Clone Designation	EP315-SSC H4
Tail Specification	ZP
Peptide Load	Endogenous
Modification	Unmodified
Conjugation	Unconjugated
Complexity	Monomer
Protein Format	Recombinant, truncated, zipper-stabilized, soluble, non-modified, non-labeled, endogenously loaded
Storage Temperature	4°C (This product should be stored undiluted)
Form	Liquid
Concentration	1000.0 µg/µl
Formulation	PBS/0.02% Sodium Azide
pH	7.4
Purification Method	Affinity Chromatography
Grade	Research Use Only [RUO]
Authentication Verification	Sequence Based Typing

Protein Sequences

Alpha Chain Sequence	<p> IKEEHVIIQA EFYLNPDQSG EFMDFDGDGE IFHVDMASSE TVWRLEEFGR FASFEAQGAL ANIAVDKANL EIMTKRSNYT PITNVPPEVT VLTNSPVELR EPNVLICFID KFTPPVVNVV WLRNGKPVTT GVSETVFLPR EDHLFRKFHY LPFLPSTEDV YDCRVEHWGL DEPLLKHWEF DAPSPLPETT EVDGGGGGAQ LEKELQALEK ENAQLEWELQ ALEKELAQ </p>
Beta Chain Sequence	<p> GDTRPRFLEQ VKHECHFFNG TERVRFLDRY FYHQEYVRF DSDVGEYRAV TELGRPDAEY WNSQKDLLEQ RRAEVDTYCR HNYGVGESFT VQRRVYPEVT VYPAKTQPLQ HHNLLVCSVN GFYPGSIEVR WFRNGQEEKT GVVSTGLIQN GDWTFQTLVM LETVPRSGEV YTCQVEHPSL TSPLTVEWRA RSESAQSKVD GGGGAQLKK KLQALKKKNA QLKWKLQALK KKLAQ </p>

Related Products

[DRB10401](#)
[DRB10407](#)
[DRB11101](#)
[DRB11501](#)

Applications

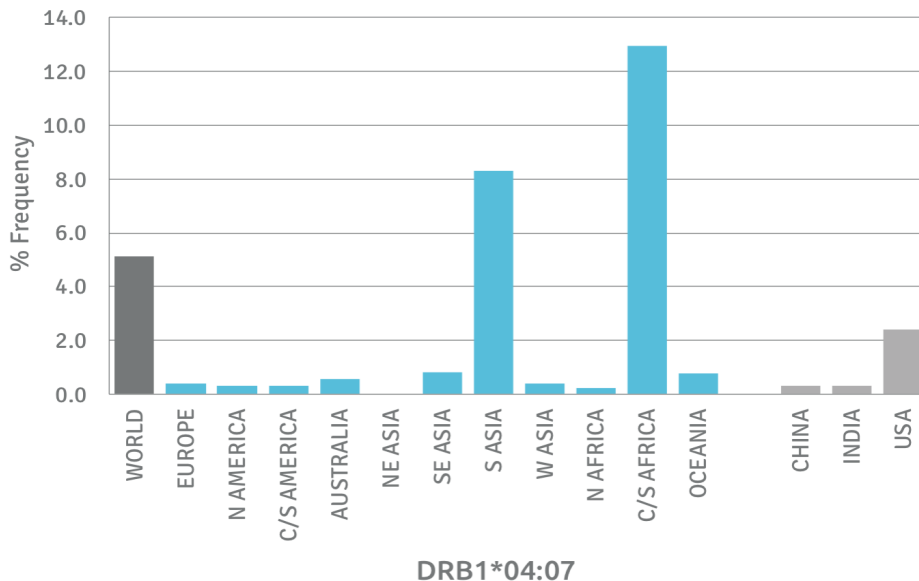
HLA Sandwich ELISAs
HLA Direct ELISAs
HLA-Sera Antibody Assays
HLA Controls in ELISA Assays
HLA Assay Standards
HLA Blocking Assays
HLA Neutralizing Assays
HLA Competition Assays
HLA Bead Assays
HLA Immunization Procedures

Recommended Antibodies

L243

Allele Frequency

Worldwide Allele Frequency



Please note:

ALL PRODUCTS ARE FOR RESEARCH USE ONLY. NOT FOR COMMERCIAL USE IN DIAGNOSTIC PROCEDURES.
For more information, please visit our Policies section on our website. For licensing inquiries, please contact

licensing@hlaprotein.com

 HLA Protein
PURE PROTEIN LLC

Eplet Assignments

DRB1*04:07

Eplet	Polymorphic Residues	Antibody Reactivity
4R	4R	Yes
16H	16H	
25R	25R	Yes
26F	26F	
28D	28D	
31F	31F	
31FY	31F32Y	
32Y	32Y	
37Y	37Y	
37YV	37Y38V	Yes
38V	38V	
40F	40F41D	
47Y	47Y	
47YR	47Y48R	
57D	57D60Y	
57DA	57D58A60Y	
58A	58A	
58AY	58A60Y	
60Y	60Y	
67LQ	67L 70Q	Yes
70Q	70Q	
70QA	70Q73A	
70QRA	70Q71R73A	
70QT	70Q77T	Yes
71R	71R	
73A	73A77T	Yes
74E	73A74E77T	
77T	77T	Yes
77TY	77T78Y	
78Y	78Y	
85V	85V	
86G	85V86G	
96Y	96Y	Yes
98E	98E	Yes
104A	104A	Yes
104AK	104A105K	
108P	105K108P	
112H	112H	
120N	120N	
140TV	140T142V	
149Q	149Q	
181T	181T	
189R	187E189R	